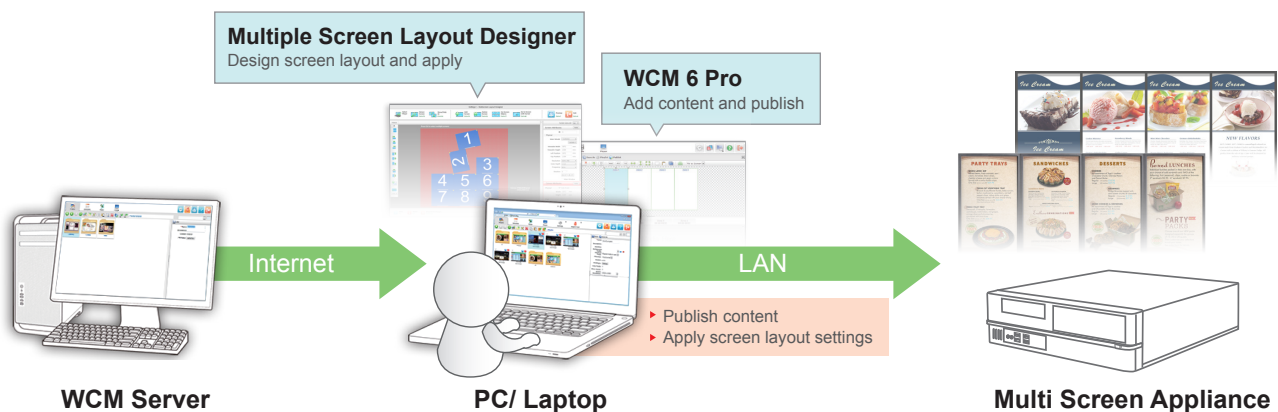


Multiple Screen Layout Designer

Quick Start Guide

This guide details how to arrange screen layouts with the Multi Screen Layout Designer to ensure content will be played in the desired position, and how to use WebDT Content Manager to create a multiscreen playlist layout with content stored at the server side.

► System Architecture



1 Use the Multiple Screen Layout Designer

Install the Multiscreen Layout Designer on the PC to be used for managing the screen layout. Run Multiple Screen Layout Designer from **Start | Program Files | DT Research | WebDT Signage Tools**.

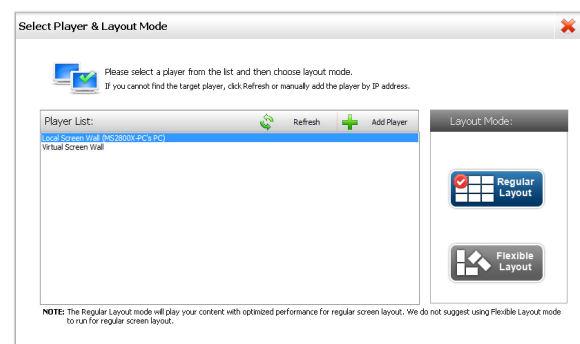
NOTE

We recommend using a monitor with resolution larger than **1280 x 800**, so the complete system interface can be displayed properly.

After launching the application, follow the steps below to adjust the screen layout:

1-1 Select Player

When you launch the application, it will automatically detect Multi Screen Appliances connected within the same LAN and display a list. Select the MS Appliance to edit its screen layout.



NOTE

If your MS Appliance is not connected with LAN or still can't be detected, please refer to **Chapter 2**.

1-2 Set Screen Matrix & Match Screen ID

If the MS Appliance has been found and connected, the layout management panel will be shown.

Click to automatically detect the screens connected to your MS Appliance.

Manually change the screen quantity and arrangement.

After applying the screen settings to the MS Appliance, click **Preview** to launch a built-in preview image shown on the screen matrix. Use **◀▶** to change the image.

On/ Off auto snap function.

Adjust the attributes of each screen.

While selecting multiple screens, use these functions to align the screens.

Input the bezel size to apply bezel compensation.

Import/ Remove the image to simulate the real visual result.

Double click the screen to change its ID.

Fit to Background
(canvas will cover all of your screens, and keep width and height ratio to the background image)

Change the viewing proportions.

Save the screen layout settings to a USB flash.

Import the screen layout settings.

Fit to Workspace
(canvas will cover all of your screens. While there is a background image inserted, the image will also stretch to fit in canvas)

- 1 Click **Set Matrix**  **Set Matrix** Ctrl+F4 and adjust the screen arrangement/ value to fit your actual screen layout/ specs.

Set Screen Matrix

Screen Numbers

Detected Screens: 4 Detect Again

Columns:

Rows:

Screen Attributes

Resolution: 🔄

Frequency:

Bezel Compensation

Unit:

Viewable Width: mm Top: mm


Viewable Height: mm Bottom: mm

Left: mm

Right: mm

- 2 Input **Rows/ Columns Number** to change the screen layout, and adjust screen attributes to fit your screen.
- 3 The **Bezel Compensation** function ensures images and video played behind the bezel will have a smooth visual effect on multiple screens. Input the LCD's viewable width and height, and the sizes of top, bottom, left and right bezels of each screen.


NOTE


If you connect additional screens after detecting your MS Appliance, please click **Detect Screen**  again before clicking **Set Matrix** to detect the total screens.

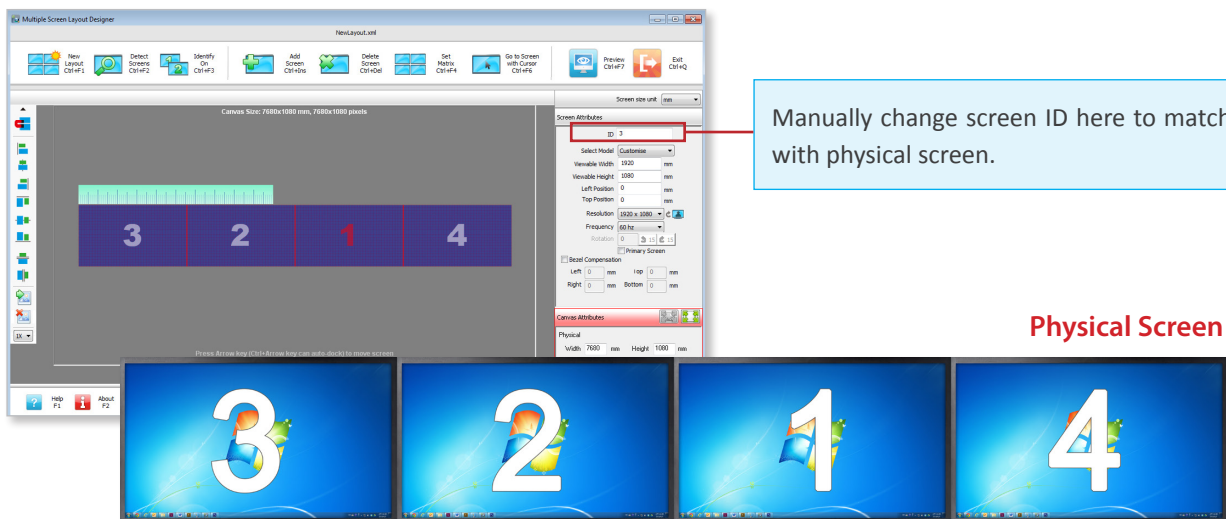
NOTE

This **Set Screen Matrix** dialog is applicable for screens with same orientation and resolution only. You can also add a screen and adjust the position & orientation directly with the Add/Delete screen button.

NOTE

After clicking the **Auto Snap** button , an on-screen ruler will be shown for you to help align the screens. The ruler can be moved and rotated.


- Click **Identify**  **Identify** On Ctrl+P3, display IDs will be shown on each physical screen. On the right panel, double click each screen and change its ID to match with the physical screen. Or, you can use the mouse to select or press Ctrl to multi-select the screens and re-arrange the screen layout.




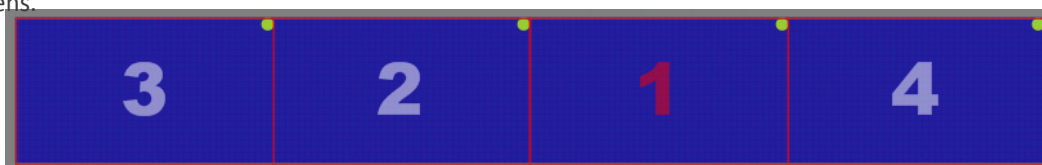
Manually change screen ID here to match with physical screen.

Physical Screen


1-3. Adjust Canvas Size

Click **Fit to workspace**  to fit the canvas size with the screens. The canvas size will set the playlist resolution to be used in WebDT Content Manager software.

If you do not click **Fit to workspace**  to fit canvas size with the screens, some screens may show black areas if outside of the canvas. If the canvas size is much larger than total screen area, only partial content will be displayed on the screens.

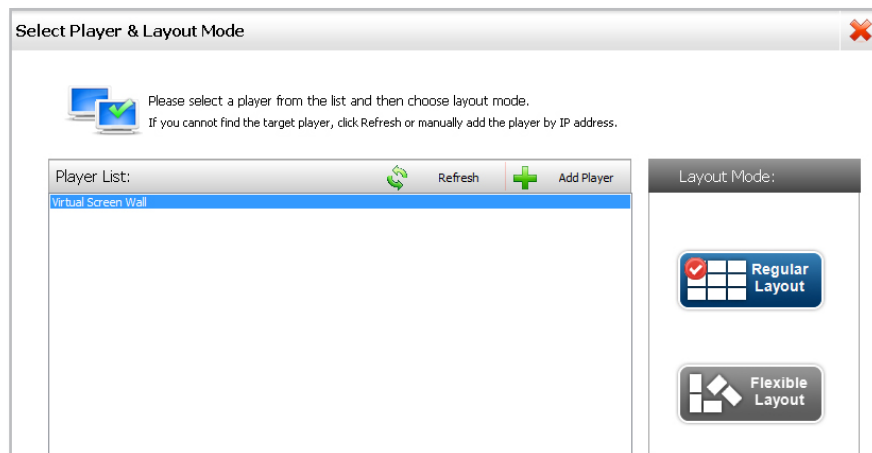


1-4. Apply Screen Settings via LAN

If the MS Appliance has been detected, you can apply the screen settings via LAN directly. Click **Apply**  **Apply** Ctrl+F12 and the settings will be sent and applied to the MS Appliance.

2 Run Multiple Screen Layout Designer without any MS Appliance Connected

If the player cannot be detected or you want to adjust the screen layout before connecting the MS Appliance within LAN, you can also use **Virtual Screen Wall** to manage the screen layout.



2-1. Manually Define the Screen Layout

- 1 Click **Set Screen Matrix** to manually change the screen quantity and arrangement to fit the physical screens.
- 2 Connect a keyboard to the MS Appliance and press **Ctrl + Alt + F4** to show the screen IDs.
- 3 Repeat 1-2 4 to match the IDs with physical screens.

2-2. Adjust Canvas Size


Repeat 1-3 to adjust canvas size.

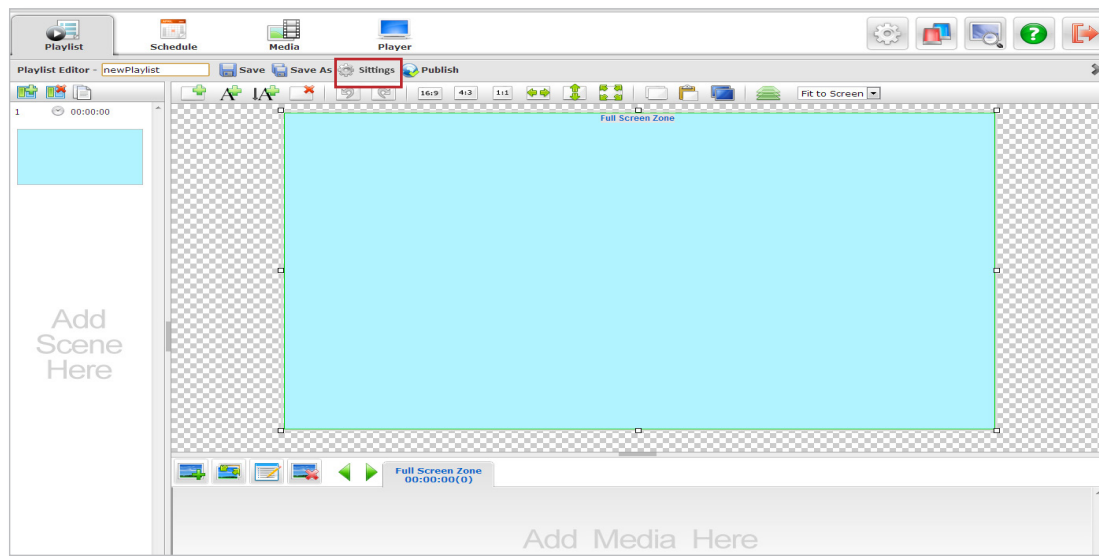
2-3. Apply the Settings by USB Flash

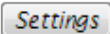
If the MS Appliance is not connected to the LAN, the screen layout settings can only be saved and applied by USB flash. Click **Save to Flash** to save the settings, insert the USB flash to the MS Appliance and a dialog will display to confirm if you want to apply the settings on this player. Click **OK** to apply.

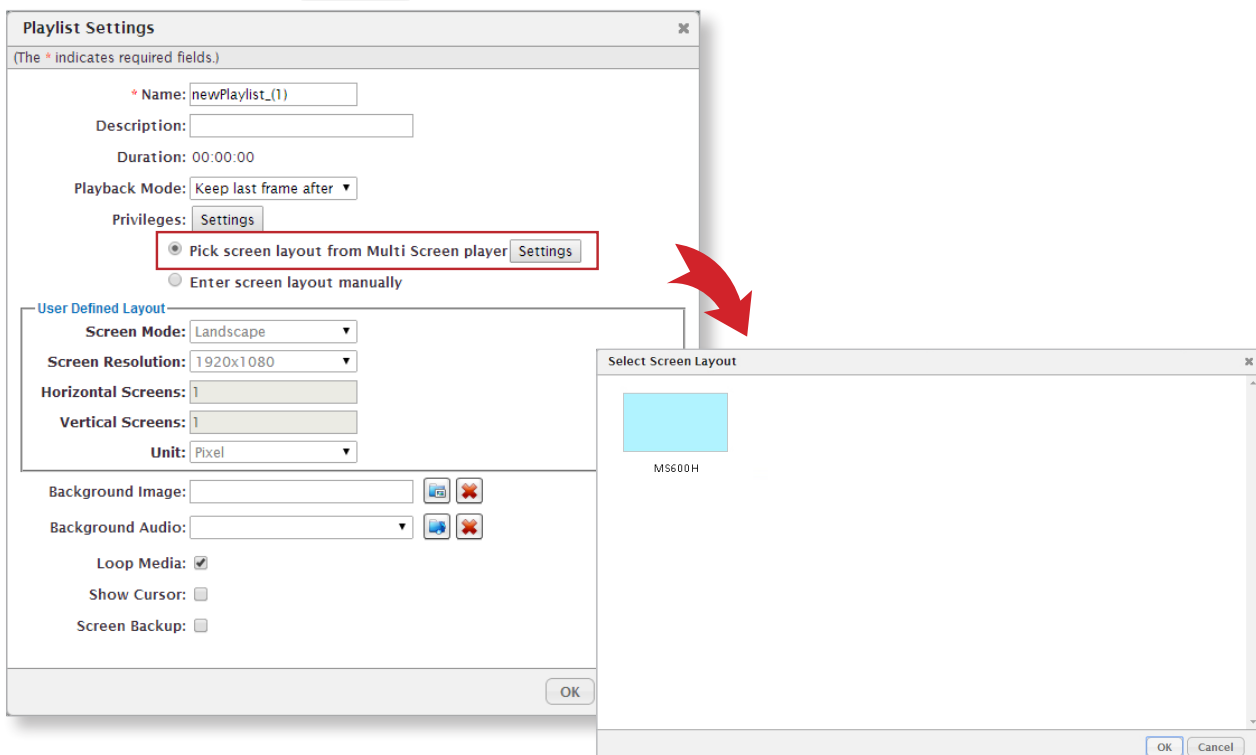
3 Manage the Multi Screen Playlist Content in WebDT Content Manager

3-1 Import Multi Screen Layout File or Create Layout Manually

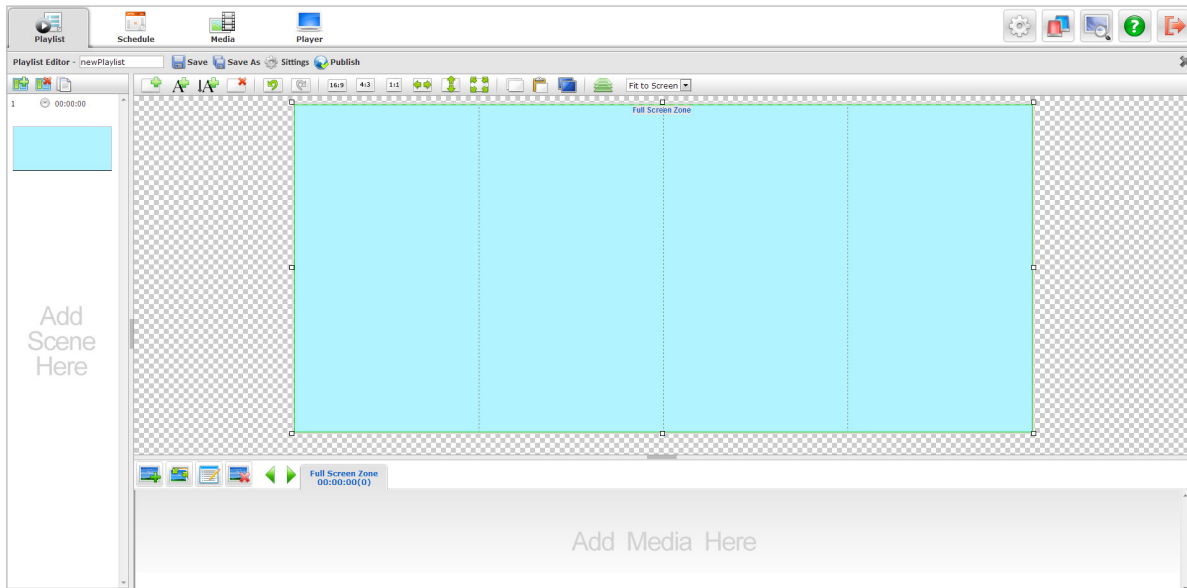
- 1 Login to your WebDT Content Manager 6 Pro server, create a new playlist and click  **Settings** to launch the Playlist Editor.





- 2 In the **Playlist Settings** dialog, you can import a multi screen layout directly from a Multi Screen Appliance registered to your WCM server. Click  to select a MS Appliance and its screen layout.

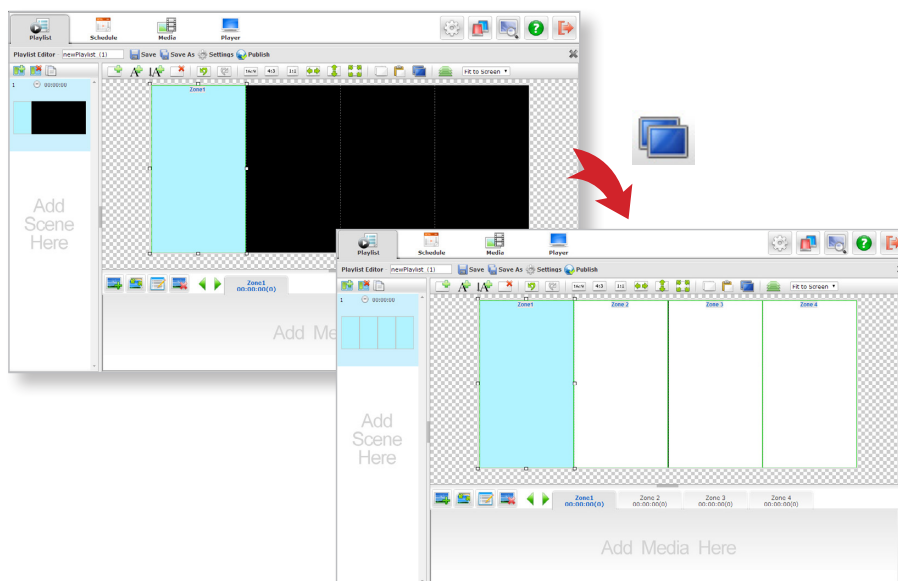


- 3 You may also manually input the quantities of the Horizontal and Vertical Screens to fit your physical screen array. For example, if your signage array is 4 x 1 vertical screens, select Vertical for the Screen Mode, and input 4 for the Horizontal Screens and 1 for the Vertical Screens. Click **OK**, the screen matrix will be shown in Playlist Editor.



3-2 Manage/ Add Zones on the Multi-Screen Playlist

Add and adjust the normal zones and/or ticker zones on the screens. While adding a normal zone on one screen, you may click **Duplicate Zones to Other Screens**  to copy zones with the same size and position to the other screens. If some zones are overlapped with each other, you can use **Zone Order**  to change the up and down sequence.

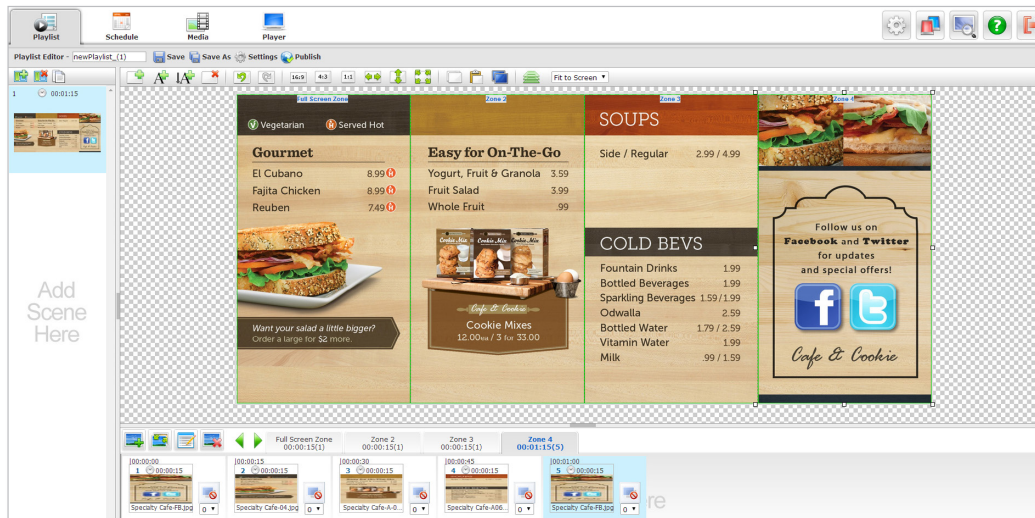


NOTE

The Duplicate Zones to other screens feature will only be applicable for zones within one screen, not across other screens.

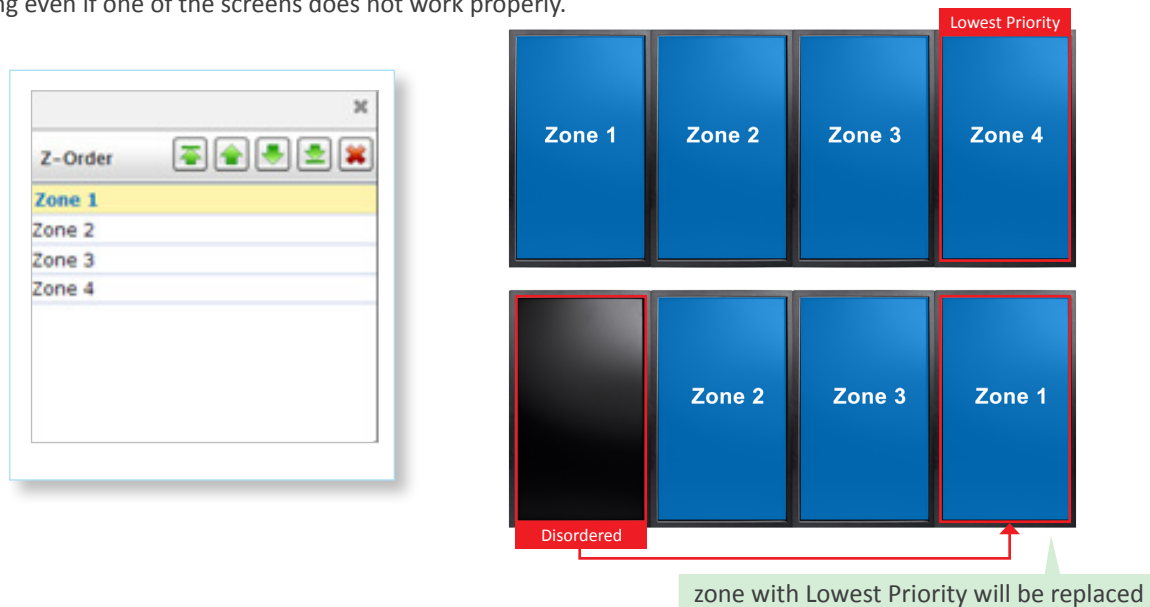
3-3 Add/ Edit Media Content to the Playlist & Publish

After finishing the playlist layout, start to select a zone and insert media files , repeat the same steps for each zone, change media duration, apply transition effects and arrange media file order, save as a playlist, and schedule to publish. Please refer to **WebDT Content Manager 6 User Manual** for the operation details.



3-4 Automatic Zone Adjustment for Menu Board Application

For multi screen application, the **Zone Order** also indicates the priority of each zone. If there are 4 zones applied on 4 screens, when the 1st screen/ Zone 1 is out of order, the zone with lowest priority (zone 4 here) will be automatically replaced by Zone 1 content. In this case, the screens with mission-critical information will keep running even if one of the screens does not work properly.



NOTE

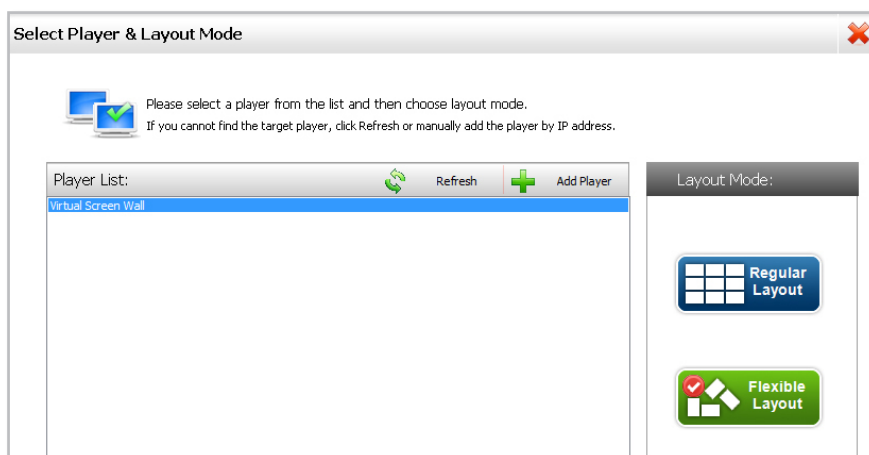
- Before performing the function, click **Settings** to enter Playlist Settings dialog and click **Screen Backup** option.
- To apply this function, the zones should not be overlapped.

4 Create Flexible Screen Layout (Optional Function)

Run Multiple Screen Layout Designer from **Start | Program Files | DT Research | WebDT Signage Tools**. After launching the application, follow the steps below to adjust the flexible screen layout.

4-1 Set Display Layout Mode




If the MS Appliance has been found and connected, select the Flexible Layout Mode, and then follow the **Step 1-1** to **1-2**. Or, you may follow the **Step 2-1** to manually define the screen layout if your player cannot be detected or you want to adjust the screen layout before connecting the MS Appliance within LAN.

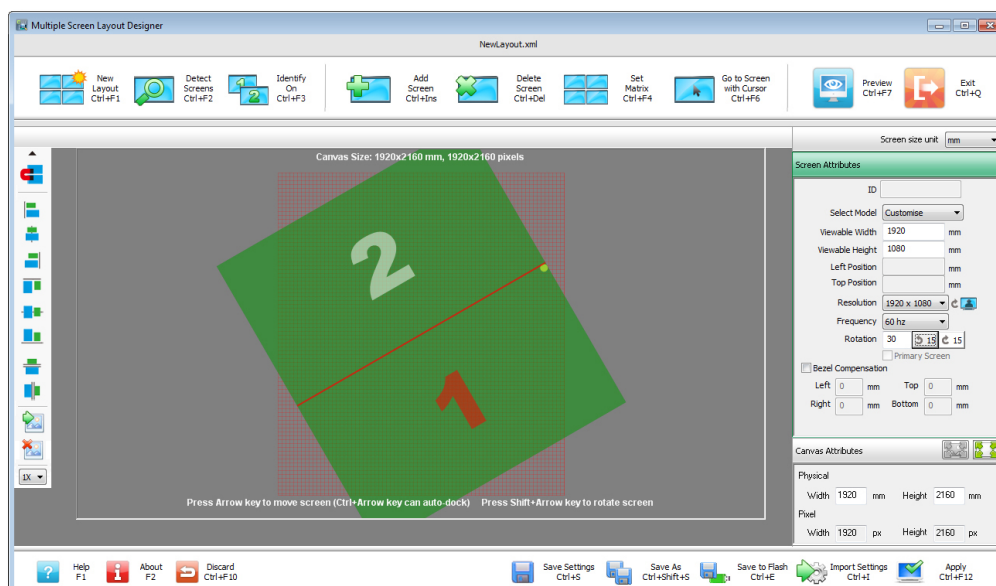


NOTE

If there is no flexible screen layout license found, the Flexible Layout Mode button will be gray and will not work.

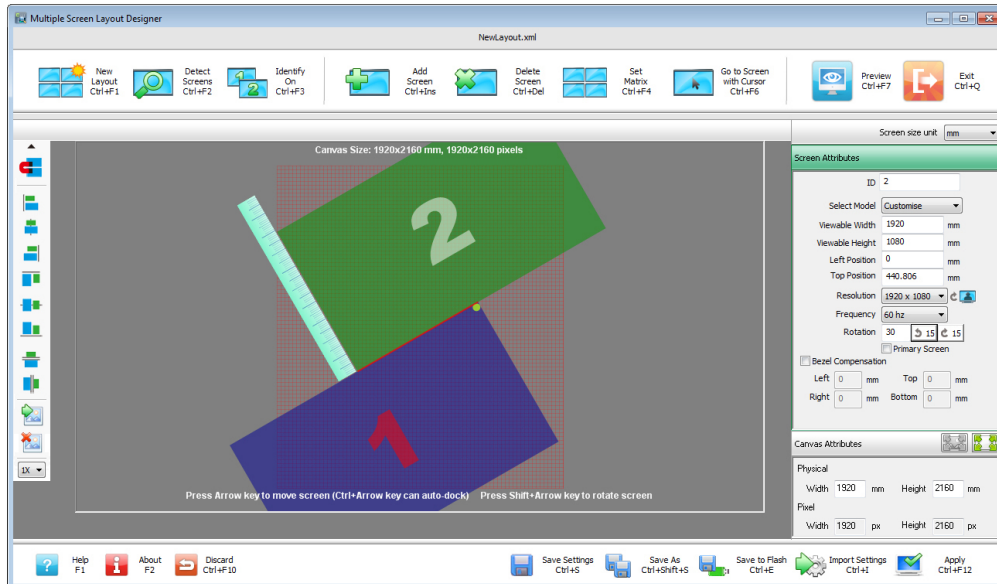
4-2 Set Screen Matrix, Match Screen ID & Rotate Screen

Please refer **Step 1-2** to set screen matrix and match the Screen ID. To rotate the screens, select the specified screens and then click/drag  to rotate. You may also click   buttons or input the angle value to adjust in the Screen Attribute panel.




4-3 Set Screen Position

Once the screens are rotated to the desired angles, select the specified screen and then press “**Ctrl + Arrow**” key or drag to the desired position.



NOTE

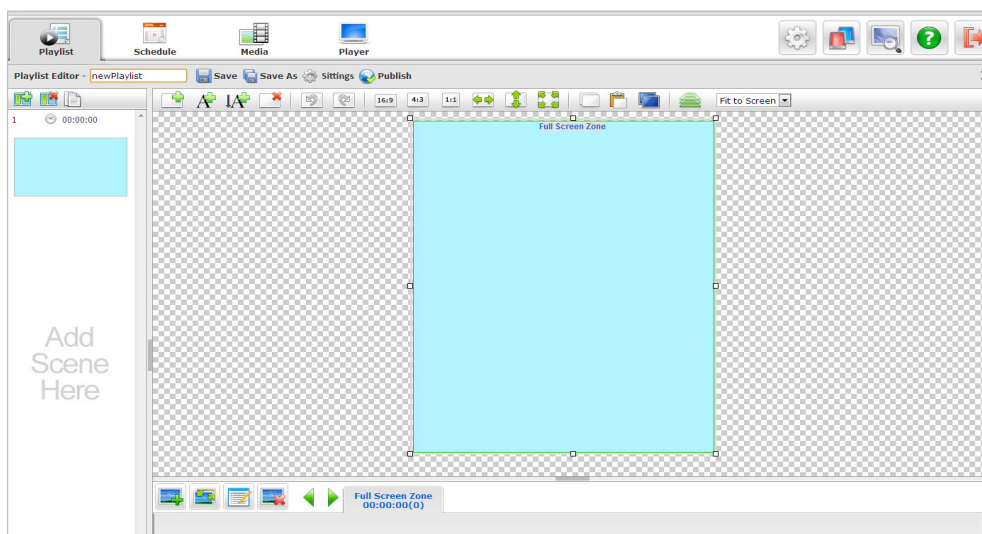
After clicking the **Auto Snap** button , an on-screen ruler will be shown for you to help align the screens. The ruler can be moved and rotated.

4-4 Adjust Canvas and Apply to the Player

To adjust the canvas size and apply screen settings via LAN, repeat **Step 1-3** to **1-4**. If your MS player is not connected to the LAN, follow **Apply the Settings by USB Flash** in **Step 2-3**.

4-5 Create a Playlist and Publish

To manage the flexible screen layout playlist content in WebDT Content Manager, please repeat the **Step 3-1**. Please refer to **WebDT Content Manager 6 User Manual** for creating playlists and publish details.



NOTE


When the flexible screen layout is imported in the WCM, only one zone can be supported.

FAQ

- **After inserting a USB flash into an MS Appliance to apply the screen layout settings, can I remove the USB flash?**

Yes, once the USB flash is inserted to the MS Appliance, the layout settings will be copied to the MS Appliance, and then you can unplug it.

- **How can I verify the multi-screen layout settings are correct, like the bezel compensation value?**

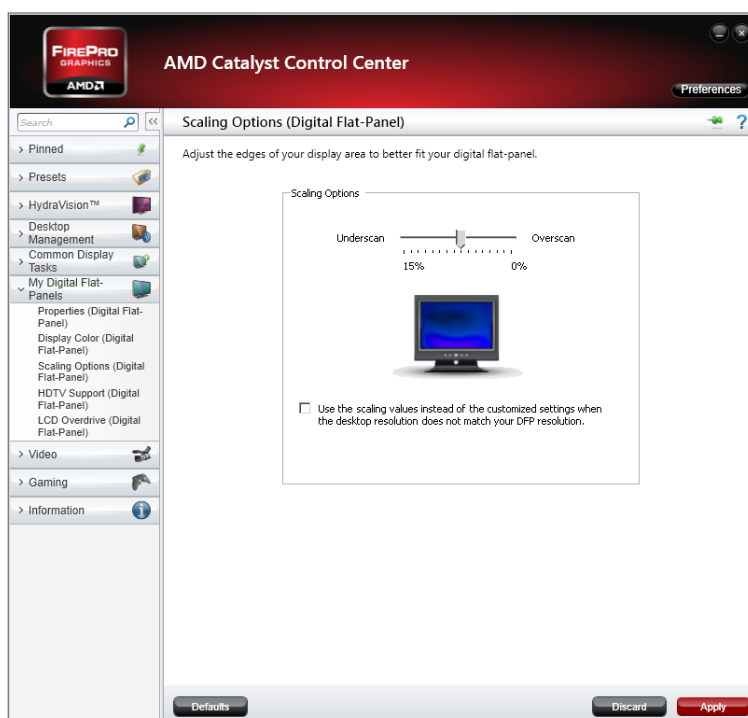
Click **Preview**  to preview some images on the connected MS appliance to verify screen position and bezel compensation settings. If you have your own images, copy those customized images into **LayoutVerifierPicture** folder and name it LayoutVerifier_n.png (where “n” is 1, 2, 3, ...). The **LayoutVerifierPicture** folder path: *C:\Program Files (x86)\DT Research\WebDT Signage Tools*

- **How to fix if the screens are not all detected?**

If the screens are not all detected, you can use Windows screen settings or ATI’s Chrystal Control Center (run Start | Program Files | Catalyst Pro Control Center | CCC - Advanced) to detect the screens connected. If the problem still exists, power off the MS player and screens, then power on the player and one screen, and power on the rest of the screens one by one.

- **How to fix overscan/ underscan issue on the display?**

When using HDMI cables to connect the MS Appliances to the screens, you may find the displayed content doesn’t fit the full screen automatically. To solve the problem, please exit WebDT Signage Player, and adjust the Overscan/ Underscan value manually in the Catalyst Control Center software included in the MS Appliances.



- **How to fix if the display problem is due to extenders?**

If the display problem occurs and is due to the video cable extenders, please contact your systems integrator for recommended cables and extenders.

- **Is it necessary to use the same screens for the MS Appliance?**

One graphic card comes with four video outputs. When you are using the mini DisplayPort-to-DVI or DisplayPort-to-DVI adapters included in the standard package, the outputs are divided into two groups (group 1 - displays 1 and 2; group 2 - displays 3 and 4). The screens used in each group must be identical. That is, with the same model and resolution. However, the groups do not need to be identical to each other.

NOTE

If using mini DisplayPort cables or DisplayPort cables directly (not included in the standard package), there will be no such limitation.

- **Screen model is not included in Multiple Screen Layout Designer tool; how can I add it?**

Please tell us your screen model and we will add it into our server. The tool will automatically get the new model info from our server when connected to the Internet. You can also add model information into the XML file at \ScreenTool\scrmmodel.xml.

- **If the system freezes, should I power off the MS appliance directly?**

If your MS Appliance hangs up, restart it from WebDT Content Manager Player management page rather than pressing the power button to restart, otherwise the OS may be corrupted. You may connect to a keyboard, press Ctrl + Alt +Del to launch Task Manager, and then reboot the system by normal process.

- **What can I do when the Operating System becomes corrupted and cannot boot into Windows?**

If your player storage is larger than 32GB, it comes with a backup OS. Reboot the system and pick PE partition. After entering PE, you will see an option to restore OS. After restoring the OS, please register the player again.

If your player storage is smaller than 32GB, please contact your sales agent to get a recovery disc.